

PROJECT BACKGROUND AND OVERVIEW

PROJECT GOALS

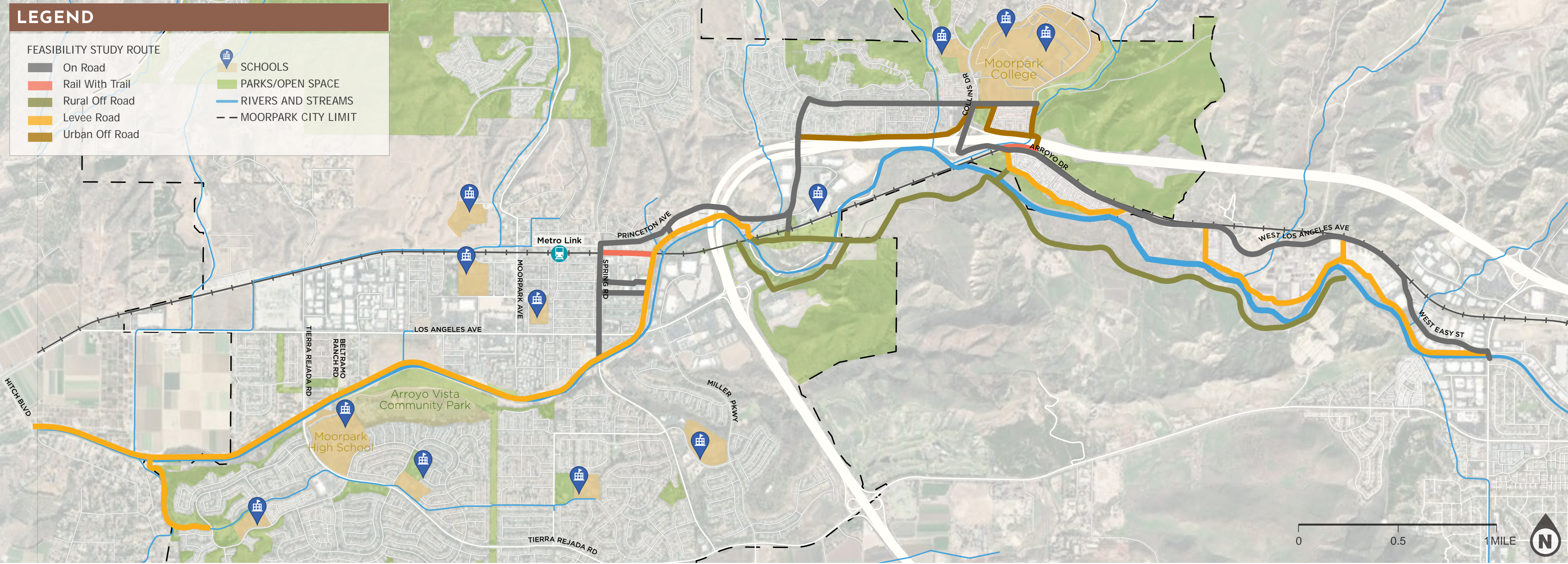
- THIS PROJECT ENVISIONS A TRAIL THAT WILL BRING:
- CONNECTIVITY TO LOCAL AND REGIONAL DESTINATIONS
 - ENVIRONMENTAL AWARENESS OF RIVER CHANNEL AND WILDLIFE HABITAT
 - HIGHLIGHT NATURAL RESOURCES
 - PROVIDE OPPORTUNITY FOR PUBLIC ART AND RECREATION ON, ADJACENT TO, AND BEYOND THE TRAIL ITSELF



www.arroyosimitrail.com



bit.ly/ArroyoSimiSurvey



PUBLIC ART OPPORTUNITIES

Principles

Public Art along the trail can be enjoyed individually or explored as a continuous experience. Guiding Principles offer artists and designers a set of criteria to guide the design of their works along the trail. These principles do not limit aesthetics or creativity but ensure a cohesive vision along the Arroyo Simi Trail.

CELEBRATE MOORPARK

At it's core, public art should be unique and celebrate Moorpark's people, cultural history, natural history and ecology, agriculture, businesses, and crafts. Public art is one of the simplest and most visible ways to tell the story of a community.



MULTI-FUNCTIONAL

Public art should be both attractive and practical. Artwork that is designed to be multi-functional creates opportunities to enhance everyday trail programming and user activities.



ENVIRONMENTAL

Public art should respond to the landscape and climatic conditions of Moorpark. The possibility of exploring and reflecting on art that strengthens the ecological system, and encouraging nature to return and flourish.



CONTEXT SENSITIVE

Public art locations should align with visible connections to adjacent communities, key moments for reflection such as viewpoints, or as smaller moments of discovery hidden along the path.



PLACEMAKING

The use of arts, culture, and creative thinking to transform the Arroyo Simi Trail into a vibrant, stimulating environment for the community.



Potential Sites for Art on Trailheads

- 1 Adjacent to Hitch Blvd
- 2 Adjacent to Tierra Rejada Rd
- 3 At the end of Beltramo Ranch Rd, near Glenwood Park
- 4 Joel's Bridge
- 5 At Moorpark Ave
- 6 Adjacent to Spring Rd
- 7 At Los Angeles Ave
- 8 At Spring Rd / Princeton Ave intersection
- 9 Adjacent to Princeton Ave Railroad crossing
- 10 Adjacent to Virginia Colony Pl railroad crossing
- 11 At corner Princeton Ave / Ronald Reagan Fwy ramp
- 12 North side of College View Park
- 13 Landscape strip between College View Ave and Melray St.
- 14 South side of Arroyo Dr / E Los Angeles Ave, Railroad crossing
- 15 Southern end of Via Del Arroyo Mobile Home Park at W Los Angeles Ave
- 16 Adjacent to Simi Valley Auto Wrecking
- 17 Oak Park Campground
- 18 Easement between businesses along W Los Angeles Ave
- 19 At W Easy St / Madera Rd intersection



POTENTIAL DESIGN THEMES

Theme 1:

WONDER-WANDER Color-Immersive

A celebration of the colors and creative spirit of Moorpark. “Wonder-Wander” imagines the trail as a vibrant corridor curated with design and vivid colors to inspire and excite the community, and create an experience to enjoy and share with others.

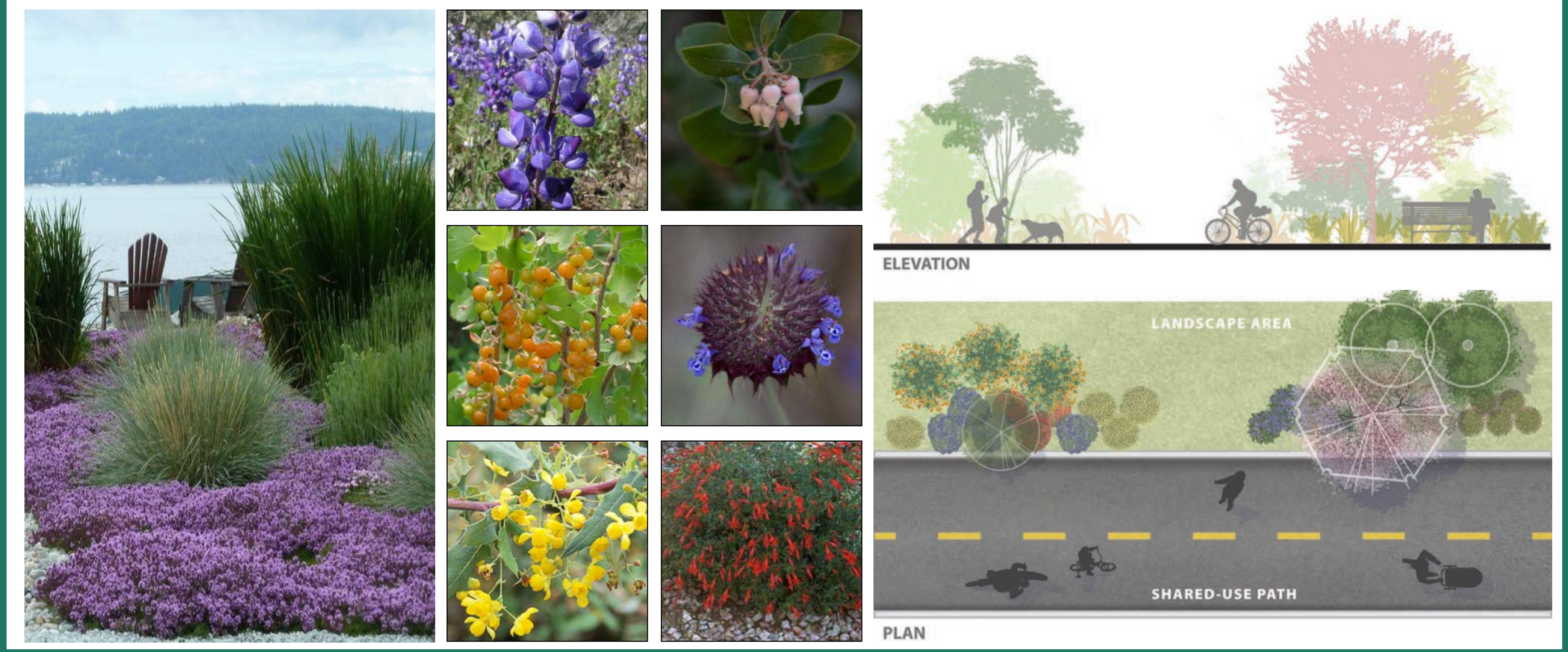
This theme draws inspiration from the vibrant colors of seasonal wildflowers in the surrounding foothills.



Style & Features



Planting



POTENTIAL DESIGN THEMES

Theme 2:

CULTIVATE Naturalistic-Order

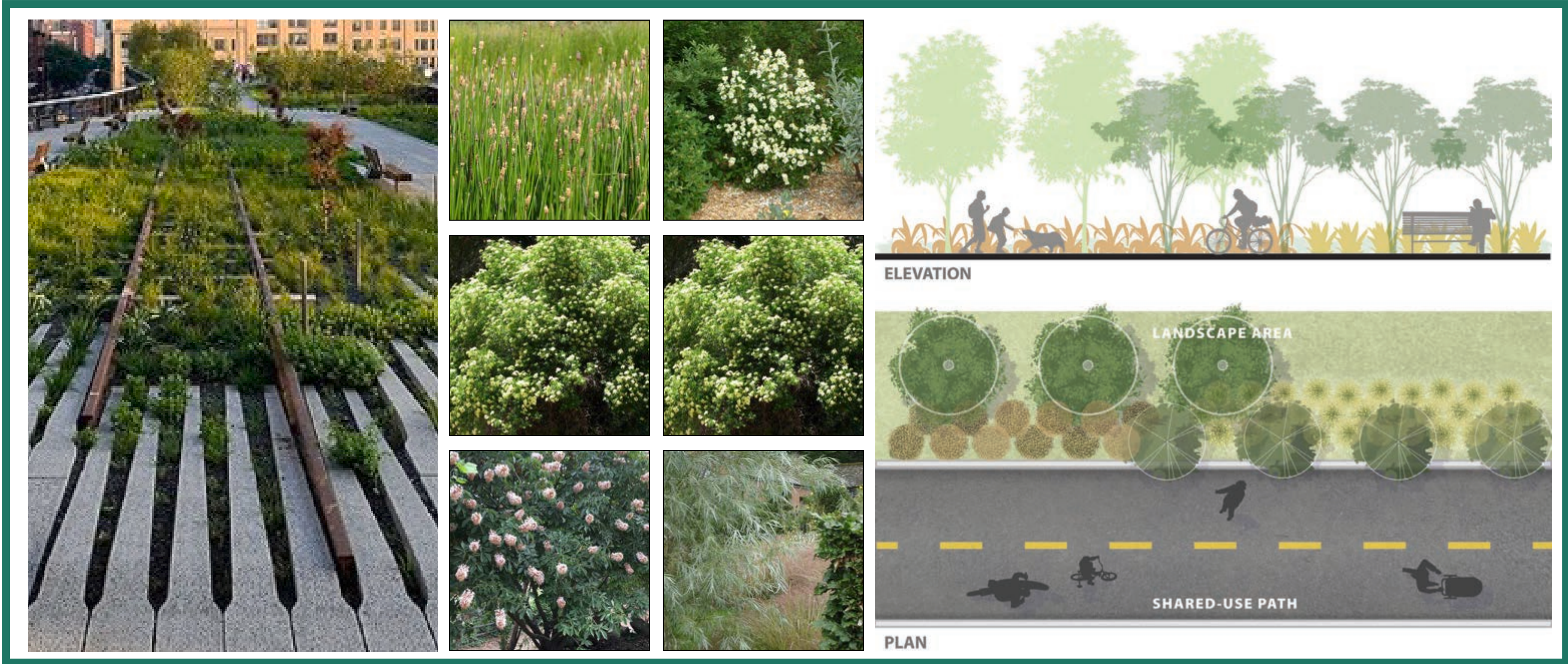
A convergence of art, agriculture, and land stewardship. "Cultivate" celebrates the strong geometric patterns of agricultural fields, the shape of the land, and the intersection of natural and conventional materials. This theme merges the colors, textures, and materials of cultivated agriculture, nature, and the city via a clean and elegant aesthetic that blends into the surroundings. This theme is inspired by the agricultural context and history of Moorpark.



Style & Features



Planting



POTENTIAL DESIGN THEMES

Theme 3:

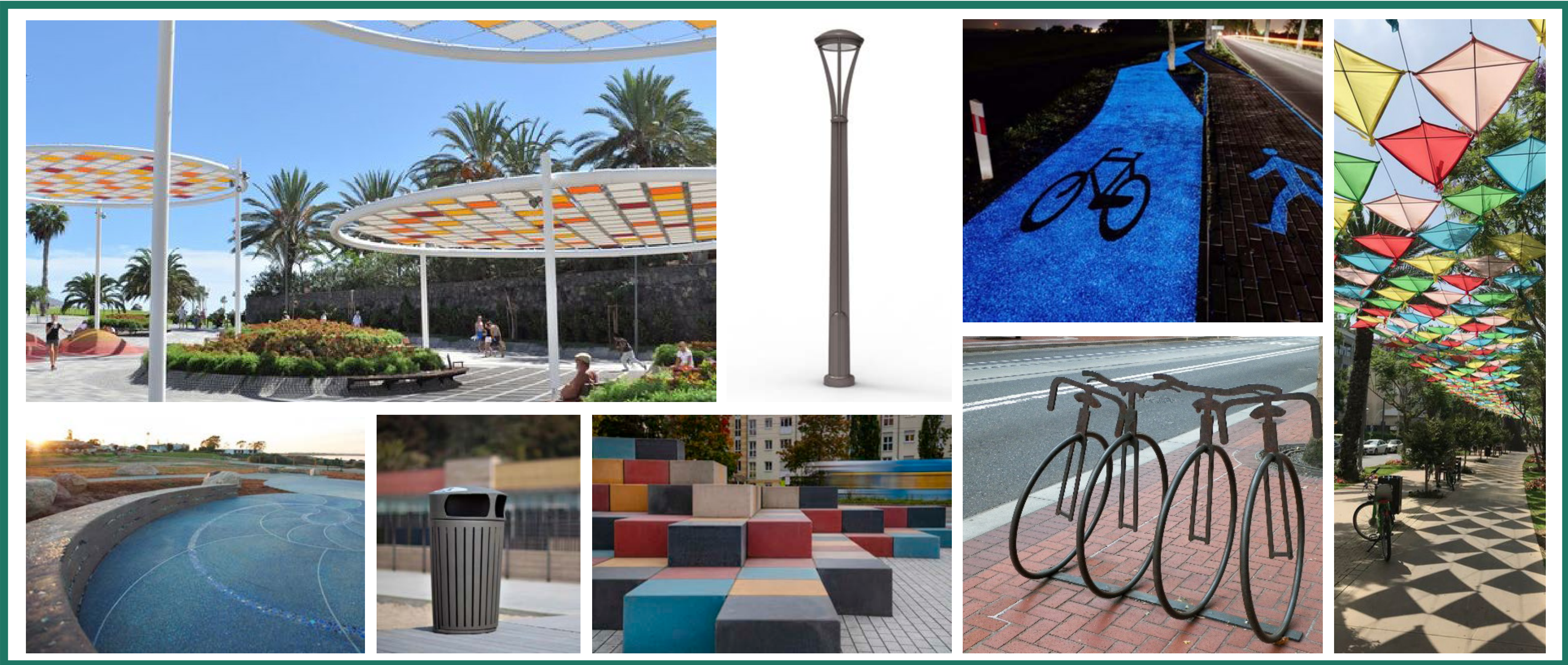
MOSAIC KINETIC-HARMONY

A celebration of diversity of Moorpark, within the community, nature and history. We envision Slick yet sophisticated Arroyo Simi Trail made to disrupt and break boundaries, creating continuous, autonomous and creative interrelations between people and their environment.

Increase diversity of Trail users through relevant art and cultural attractions – expanding on who is using the Trail and who feels welcome.



Style & Features



Planting



WHAT FEATURES WOULD YOU LIKE TO SEE ALONG THE TRAIL?



Play Equipment



Interpretive Signage



Fitness Equipment



Seating



Picnic Tables



Bike Repair Station



Water Fountains

WHAT OTHER FEATURES ARE YOU INTERESTED IN?



Shade Trees



Native
Landscaped Areas

