



Community Workshop 1 | October 24th 2023

Welcome

Jessica Sandifer

Deputy Parks and Recreation Director
City of Moorpark



Agenda

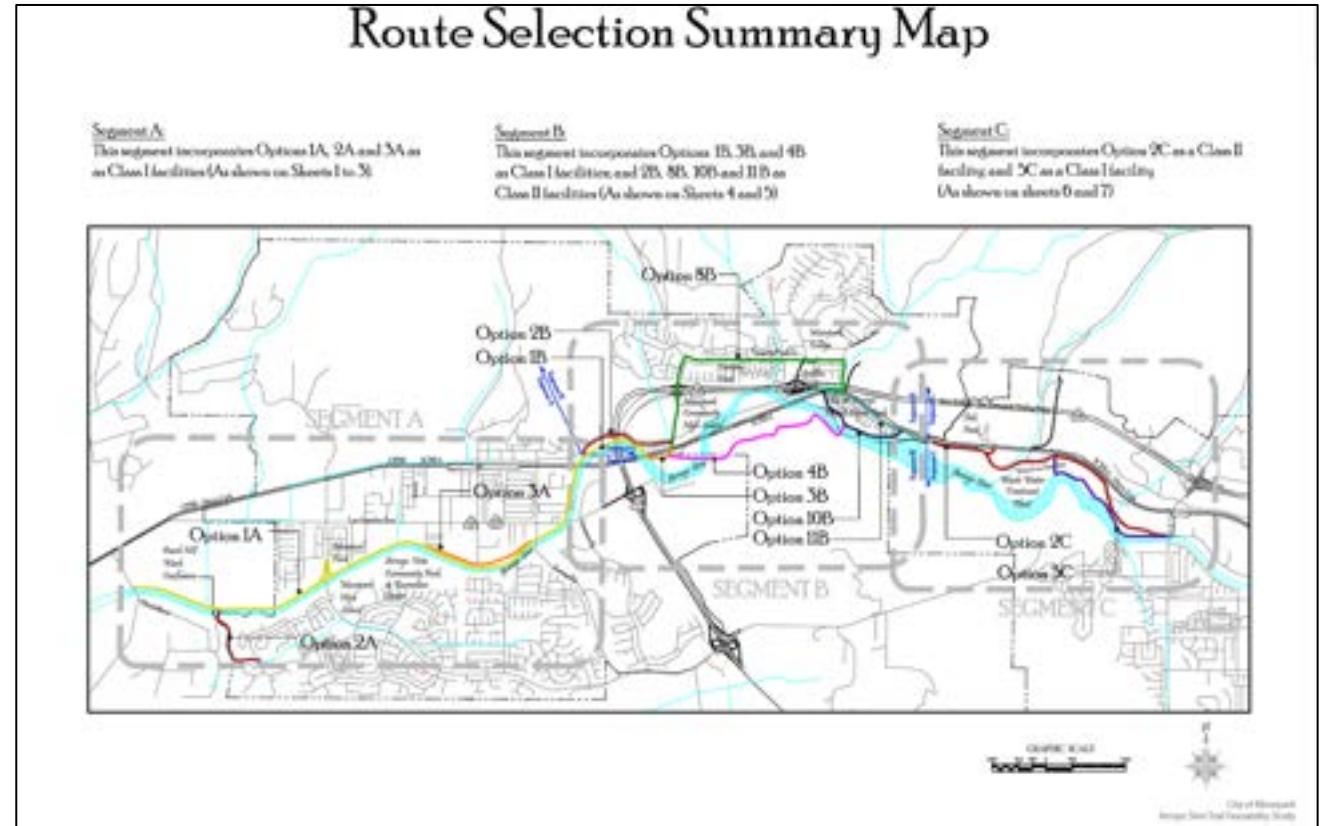
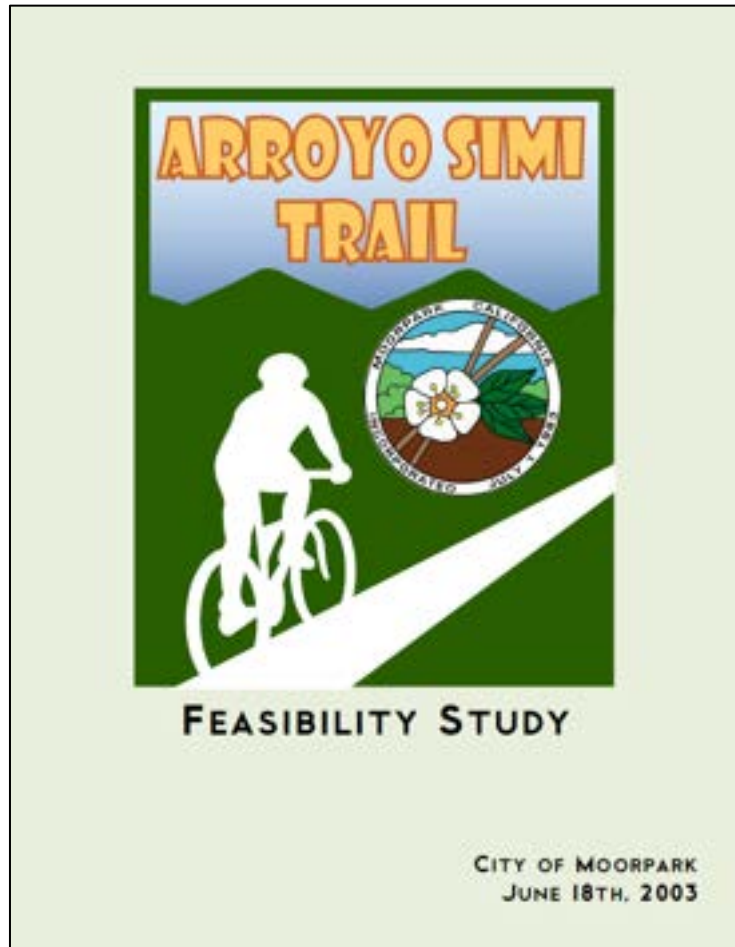
- Project Background
 - Study Area, History, Vision, and Goals
- Alignment and Crossing Evaluation
 - Opportunities, Challenges, and Options
- Visioning Exercise
 - Survey, Preferences, and Strategies
- Next Steps
 - Upcoming Tasks and How to Stay Involved

Project Background

Study Area, History, Vision, and Goals



History



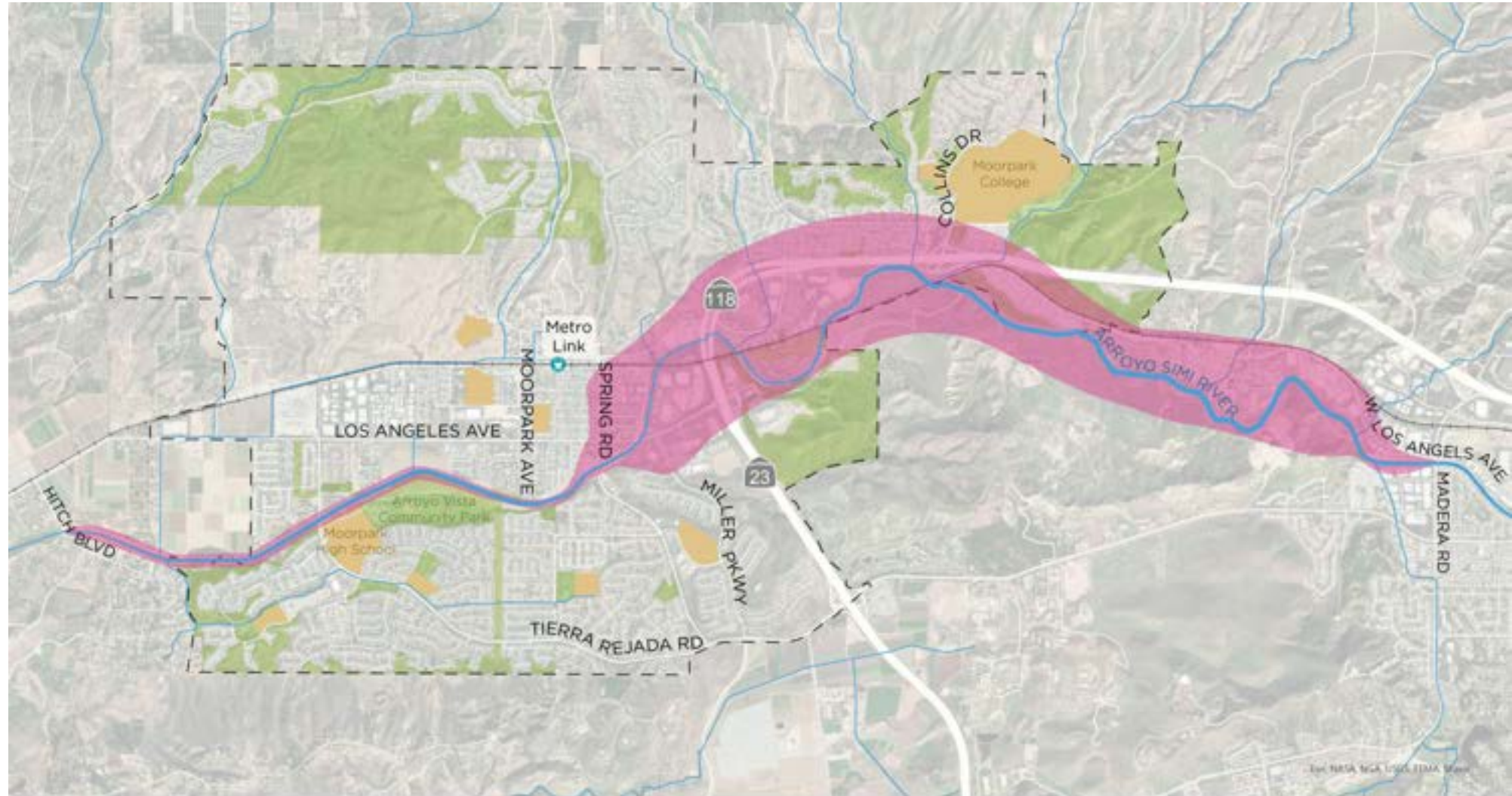
Vision

- A plan for building a **shared-use trail along the Arroyo Simi** as it travels through Moorpark.
- The Arroyo Simi Trail presents a tremendous opportunity for Moorpark to **expand its open space and active transportation networks** both locally and regionally.
- This key component of the larger Arroyo Simi Trail **will connect to Simi Valley's portion of the trail** and help set precedent for extending the trail into Ventura County.

Goals

Beyond a transportation facility, this project envisions a trail that provides:

- **Connectivity** to local and regional destinations
- Environmental awareness and opportunities to access adjacent **natural resources**
- Support for arts and recreation, including **public art components**
- **Recreational opportunities** on, adjacent to, and beyond the trail itself



- MOORPARK CITY LIMIT
- STUDY AREA
- SCHOOLS
- PARKS/OPEN SPACE
- RIVERS AND STREAMS

0 1 2 MILES N





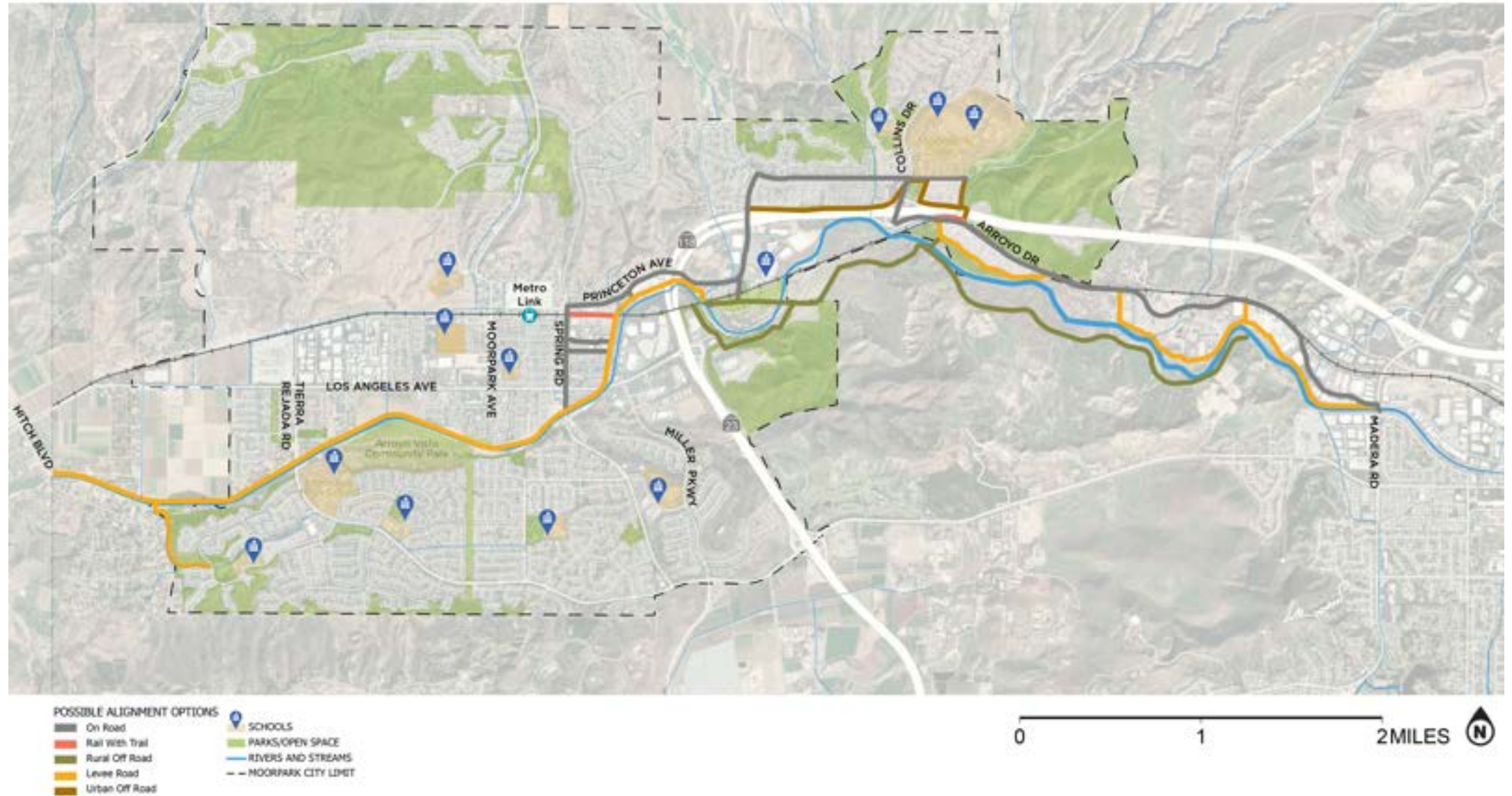


UPRR at Arroyo Simi River

Alignment Evaluation

Opportunities, Challenges, and Options





Hitch – Tierra Rejada



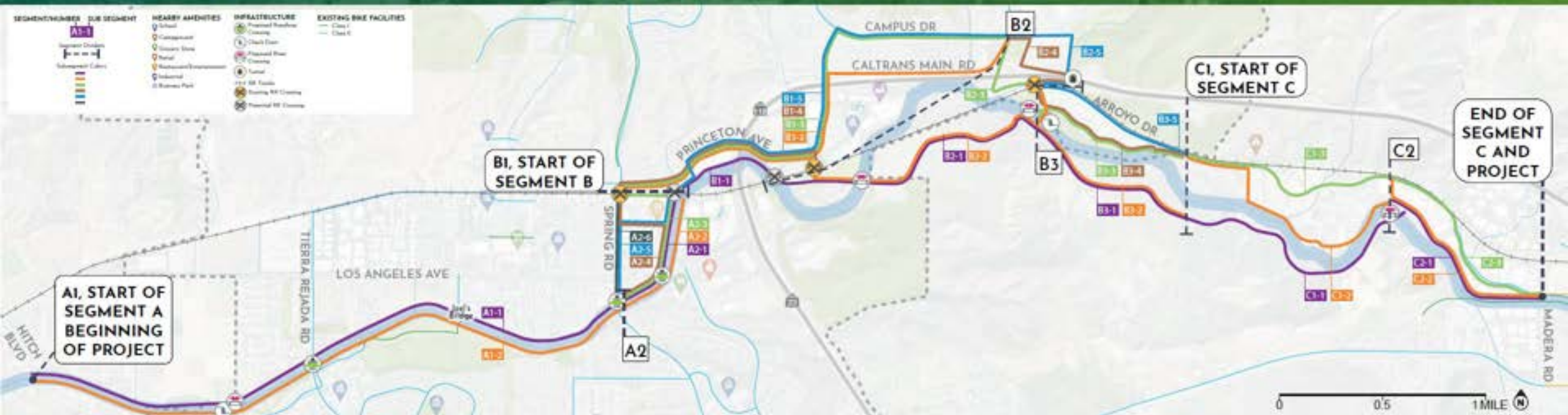
Spring – Metrolink



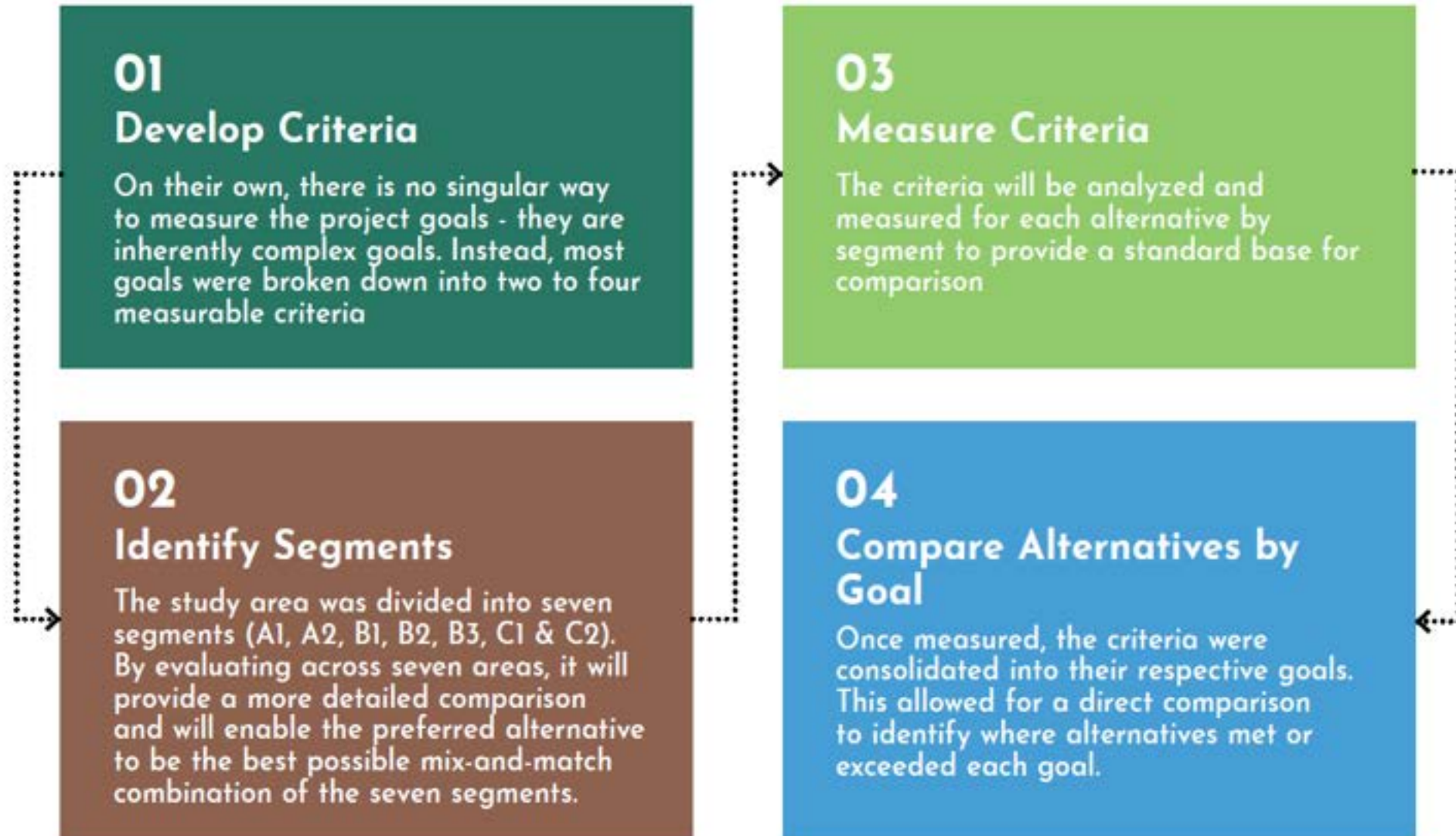
Princeton – Simi Valley



POTENTIAL ALIGNMENTS FOR TRAIL



Alignment Evaluation



Evaluation Criteria

- **Feasibility**

- Agency Coordination / Permitting
- Right of Way Ownership
- Cost
- Major Obstructions

- **Comfort and Experience**

- Grades / Accessibility
- Spacing Between Access Points

- **Safety**

- Degree of Separation
- Intersections and Driveways
- Collision History

- **Community Connectivity**

- Bike/Ped Connections
- School Access
- Retail/Community Links

- **Recreational Amenities**

- Parks
- Opens Space

- **Environmental Preservation**

- Preservation and Enhancement

- **Public Art**

- Trailhead and Alignment Opportunities

Crossing Evaluation

—
Opportunities, Challenges, and Options



Tierra Rejada



Spring



Los Angeles



Metrolink



Avenida Colonia

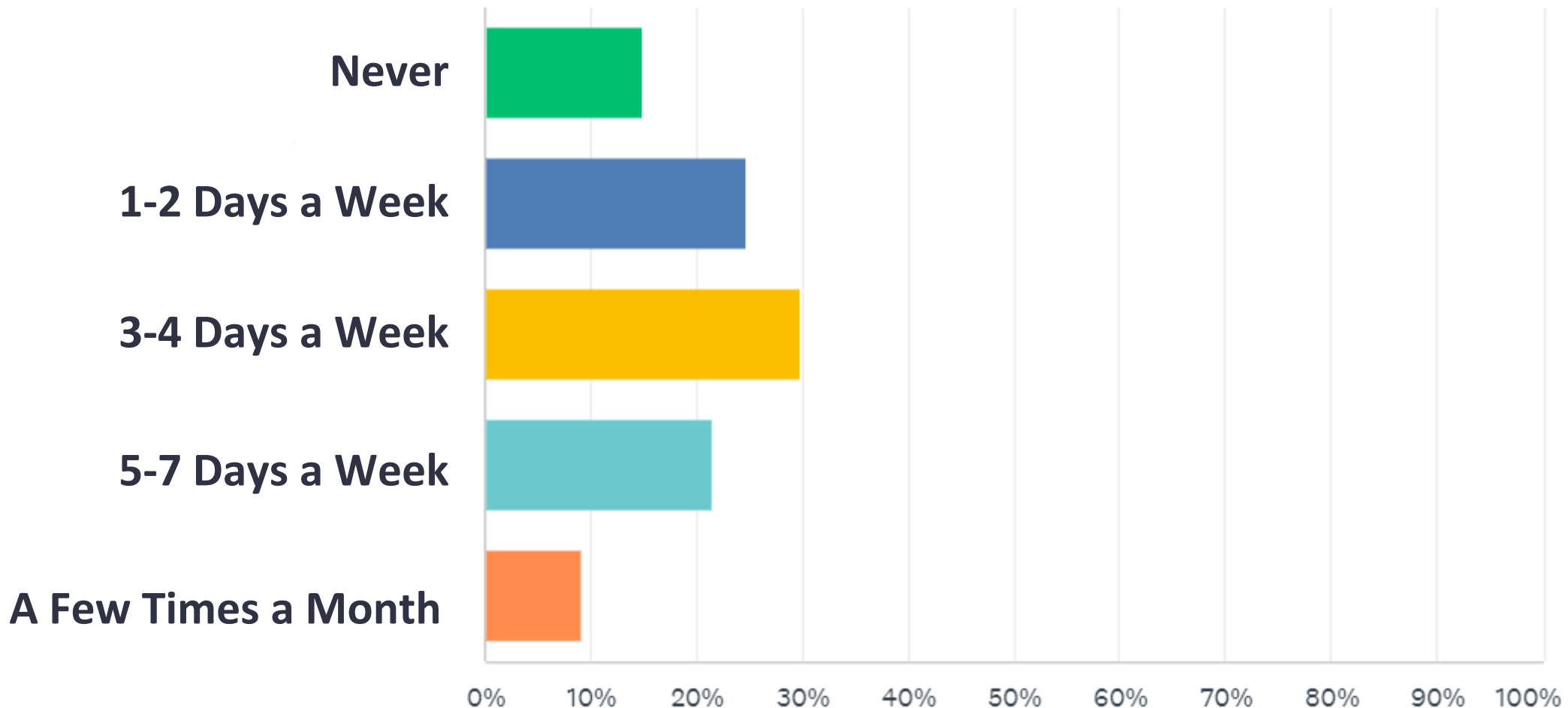


Visioning Exercise

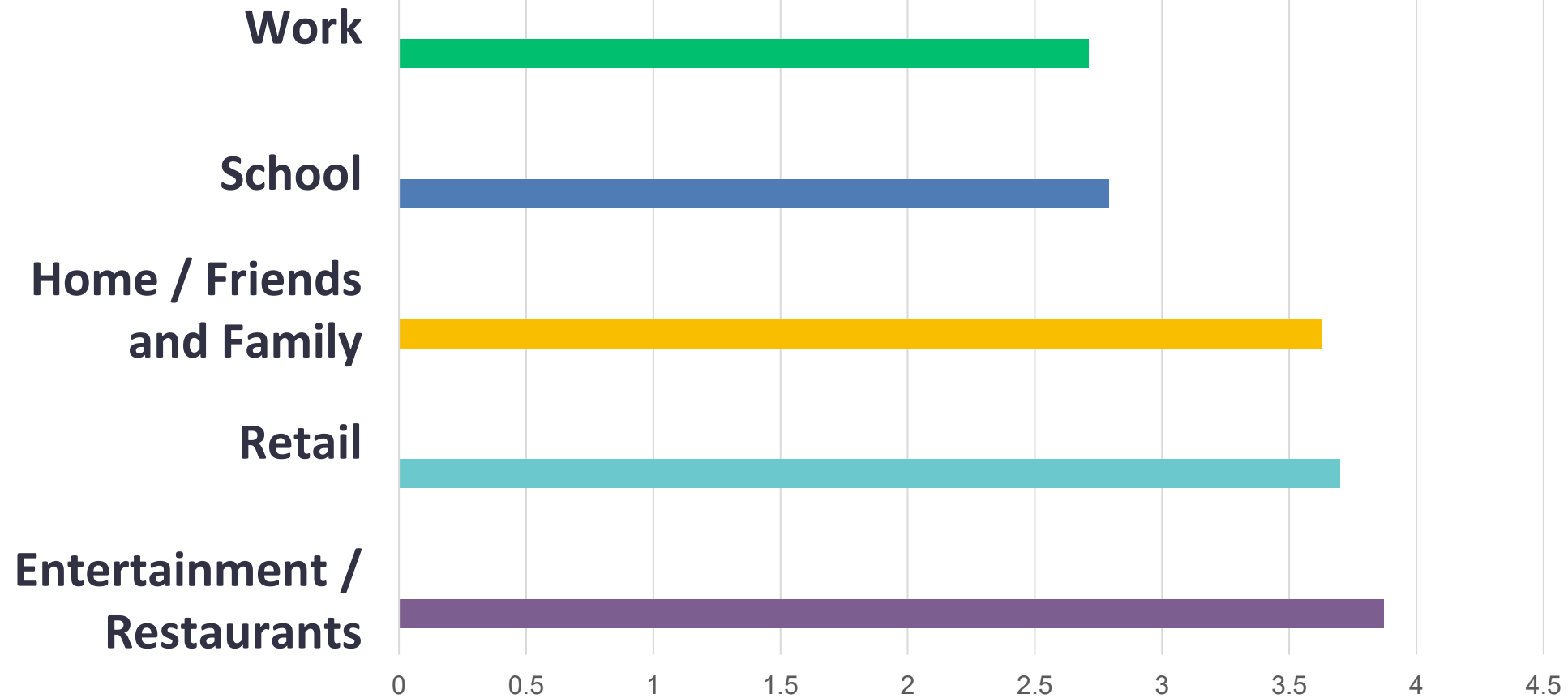
Survey, Preferences, and Strategies



Survey – How Often do you Walk/Bike/Roll?



Survey - Key Destinations





Survey - Art

Sculpture

Interactive

Murals

0 5 10 15 20 25 30

Art and Access Points



Public Art Opportunities

Principles

Public Art along the trail can be enjoyed individually or explored as a continuous experience. Guiding Principles offer artists and designers a set of criteria to guide the design of their works along the trail. These principles do not limit aesthetics or creativity but ensure a cohesive vision along the Arroyo Simi Trail.

CELEBRATE MOORPARK

At it's core, public art should be unique and celebrate Moorpark's people, cultural history, natural history and ecology, agriculture, businesses, and crafts. Public art is one of the simplest and most visible ways to tell the story of a community.



MULTI-FUNCTIONAL

Public art should be both attractive and practical. Artwork that is designed to be multi-functional creates opportunities to enhance everyday trail programming and user activities.



Public Art Opportunities

ENVIRONMENTAL

Public art should respond to the landscape and climatic conditions of Moorpark. The possibility of exploring and reflecting on art that strengthens the ecological system, and encouraging nature to return and flourish.



CONTEXT SENSITIVE

Public art locations should align with visible connections to adjacent communities, key moments for reflection such as viewpoints, or as smaller moments of discovery hidden along the path.



PLACEMAKING

The use of arts, culture, and creative thinking to transform the Arroyo Simi Trail into a vibrant, stimulating environment for the community.



Theme 1:

WONDER-WANDER

Color - Immersive



Theme 2:

CULTIVATE

Naturalistic - Order



Theme 3:

MOSAIC

Kinetic - Harmony



Theme 1:

WONDER-WANDER Color-Immersive

A celebration of the colors and creative spirit of Moorpark. "Wonder-Wander" imagines the trail as a vibrant corridor curated with design and vivid colors to inspire and excite the community, and create an experience to enjoy and share with others.

This theme draws inspiration from the vibrant colors of seasonal wildflowers in the surrounding foothills.



Theme 1: **WONDER-WANDER**



Theme 2:

CULTIVATE Naturalistic-Order

A convergence of art, agriculture, and land stewardship. "Cultivate" celebrates the strong geometric patterns of agricultural fields, the shape of the land, and the intersection of natural and conventional materials. This theme merges the colors, textures, and materials of cultivated agriculture, nature, and the city via a clean and elegant aesthetic that blends into the surroundings.

This theme is inspired by the agricultural context and history of Moorpark.



Theme 2: **CULTIVATE** Naturalistic-Order



Theme 3:

MOSAIC KINETIC-HARMONY

A celebration of diversity of Moorpark, within the community, nature and history. We envision Sleek yet sophisticated Arroyo Simi Trail made to disrupt and break boundaries, creating continuous, autonomous and creative interrelations between people and their environment.

Increase diversity of Trail users through relevant art and cultural attractions – expanding on who is using the Trail and who feels welcome.



Theme 3:

MOSAIC KINETIC-HARMONY



Amenities



Next Steps

Upcoming Tasks
and How to Stay Involved

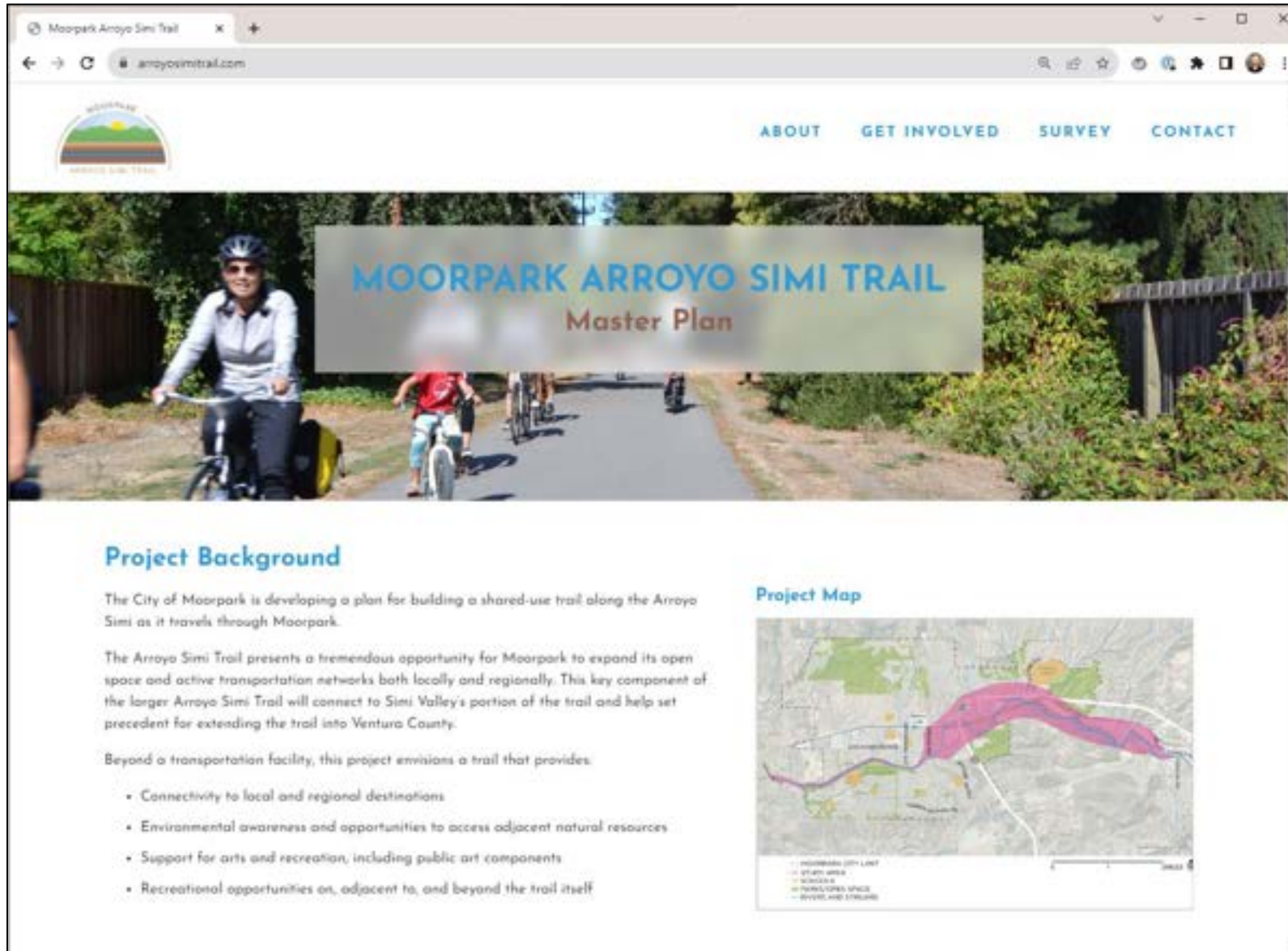


Next Steps

- Agency Coordination
- Alignment Evaluation
- Crossing Evaluation
- Community Workshop 2



www.arroyosimitrail.com





www.arroyosimitrail.com